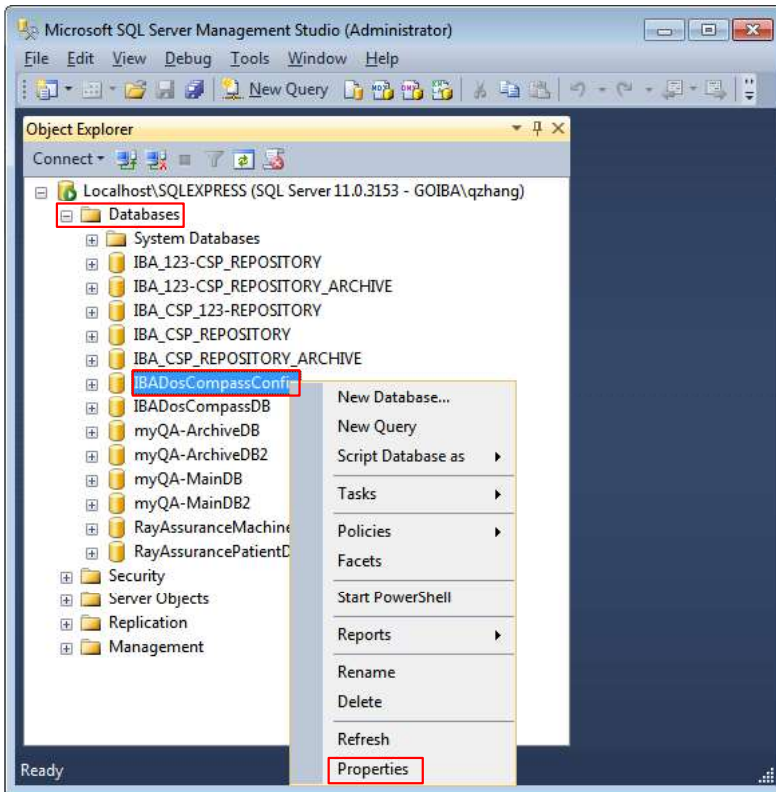
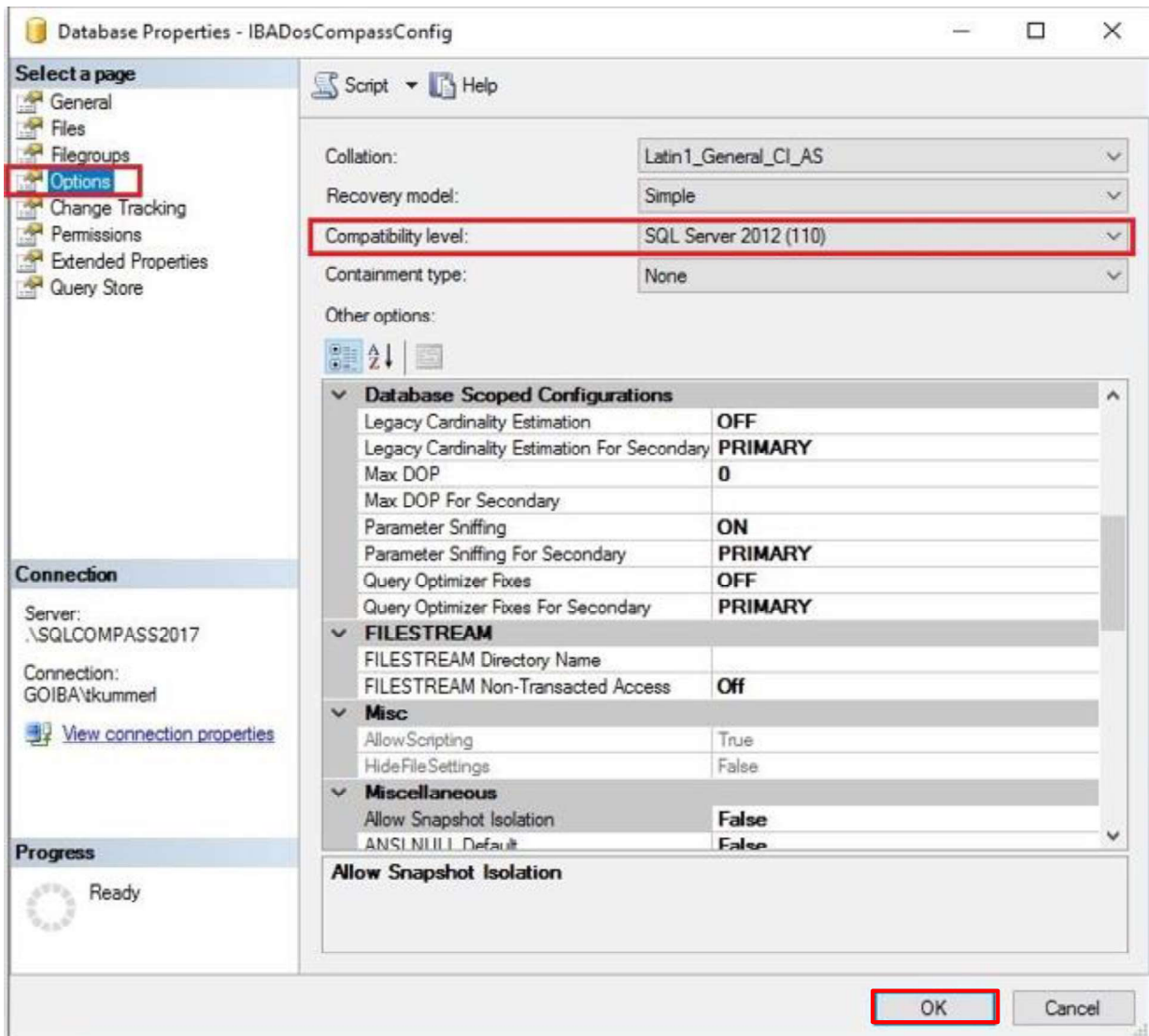


16.4.2. Set SQL 2016 in 2012 Compatibility mode

- Click **Start > All programs > Microsoft SQL Server 2016 > SQL Server Management Studio**.
- Expand the **Database** folder and then right click **IBADosCompassConfig**, and then select **Properties**.



- Select **Options** under **Select a page**, select “SQL Server 2012” for the **Compatibility level**, and click **OK**.



- Repeat the above procedure for other three COMPASS databases.
- Finally refresh and close the **SQL Management Studio** window.

